



NC GROWING TOGETHER

Connecting Local Foods
to Mainstream Markets

NC Growing Together is funded by the United States
Department of Agriculture, National Institute of Food
and Agriculture, grant #2012-68004-20363



Pastured Pork



Any opinions, findings, conclusions, or recommendations expressed
in this publication are those of the author(s) and do not necessarily
reflect the view of the U.S. Department of Agriculture.

Totals estimated per pig based on a 30 pig herd

Pastured Pork

★ Breaking Down the Cost ★



CONV. FEED (700lbs)

\$174.00 (Feed)
\$285.00 (GMO Free Feed)
\$356.00 (Organic Feed)



LABOR

\$35.00



FARM COSTS

\$56.00



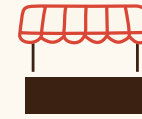
TRANSPORTATION

\$44.00 per pig
includes two round trips
(drop-off/pick up @ 10 pigs)



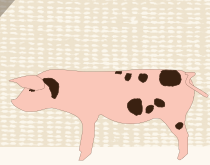
PROCESSING

\$200.00
fresh meat only



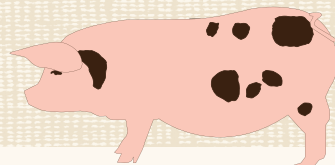
MARKETING & SALES

\$65.00



50lbs

6 months on pasture



250lbs

Transportation & Slaughter



180lbs

Cut & Wrap Retail Packaging

123lbs

RUNNING TOTAL

\$75.00 (Feeder Pig) + \$265.00 (w/ Conv. Feed)
\$376.00 (w/ GMO Free Feed)
\$447.00 (w/ Organic Feed)

+ \$44.00 + \$265.00 =

TOTAL COST/PIG

TOTAL COST/LB

\$649.00

\$5.28/lb (w/ Conv. Feed)

\$760.00

\$6.18/lb (w/ GMO Free Feed)

\$831.00

\$6.76/lb (w/ Organic Feed)

Farmers have approximately \$5.28/lb break-even value using commercial feed, \$6.18/lb using GMO-Free feed, and \$6.76/lb using Organic Feed. Note: Data will vary.

Feeder Pig

TOTAL: PER lb.

\$75.00 \$0.61

Pig Feed

\$174.00 \$1.41 (Conv. Feed)
\$285.00 \$2.32 (GMO Free Feed)
\$356.00 \$2.89 (Organic Feed)

Labor

\$35.00 \$0.28

Fixed Costs

\$56.00 \$0.46

Transportation

\$44.00 \$0.36

Processing

\$200.00 \$1.63

Marketing & Sales

\$65.00 \$0.53

+ \$649.00 \$5.28 /lb (w/ Conv. Feed)
\$760.00 \$6.18/lb (w/ GMO Free Feed)
\$831.00 \$6.76/lb (w/ Organic Feed)



NC GROWING TOGETHER

Connecting Local Foods to Mainstream Markets



For more information behind the cost assumptions visit:
<https://ncfarmschool.ces.ncsu.edu/small-scale-budgets/>

STOP HERE